

## SPECTRAWIN<sup>®</sup> 2

SpectraWin 2 is the latest member of the SpectraWin software family. Like its predecessor, SpectraWin 2 is a Windows (98, ME, 2000, XP) based control program designed to provide a powerful and easy-to-use interface to control and manipulate data from your PR-6XX (PR-640, PR-645 or PR-650) and PR-7XX (PR-704\*, PR-714\*, PR-705 or PR-715) SpectraScan spectroradiometer. In addition to the standard features of measurement and display of spectral power distribution, luminance and colorimetry of the source, SpectraWin 2 has additional features for viewing, analyzing and calculating measured data.

### Multiple Choice

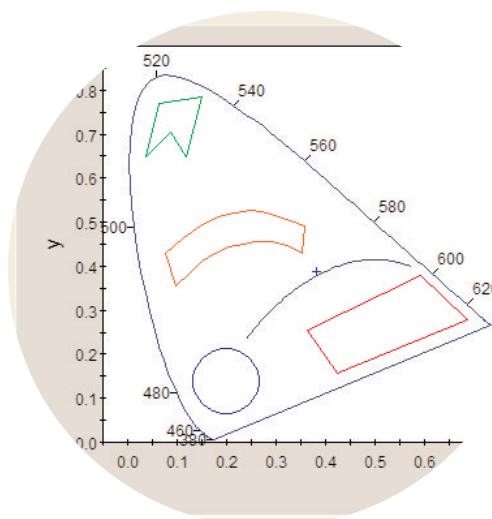
SpectraWin 2 can be purchased in three versions: SpectraWin Lite, SpectraWin Pro and with the RGB DisplayCal option. SpectraWin Lite provides the basic suite of measurement capabilities. SpectraWin Pro includes a powerful Macro Scripting tool to help you automate your measurement tasks. The RGB DisplayCal package turns your SpectraScan into a Windows based display calibration tool enabling you to interactively set the white point of the display from a "learned" stimulus (golden display) or by entering target values.

### Capabilities

- ◆ Spectral Radiance/Irradiance
- ◆ Luminance/Illuminance
- ◆ CIE Chromaticity
- ◆ Correlated Color Temperature
- ◆  $L^*a^*b^*$  /  $L^*u^*v^*$
- ◆  $\Delta E^*ab$ ,  $\Delta E^*uv$
- ◆ Reflectance
- ◆ Transmittance
- ◆ Optical Density

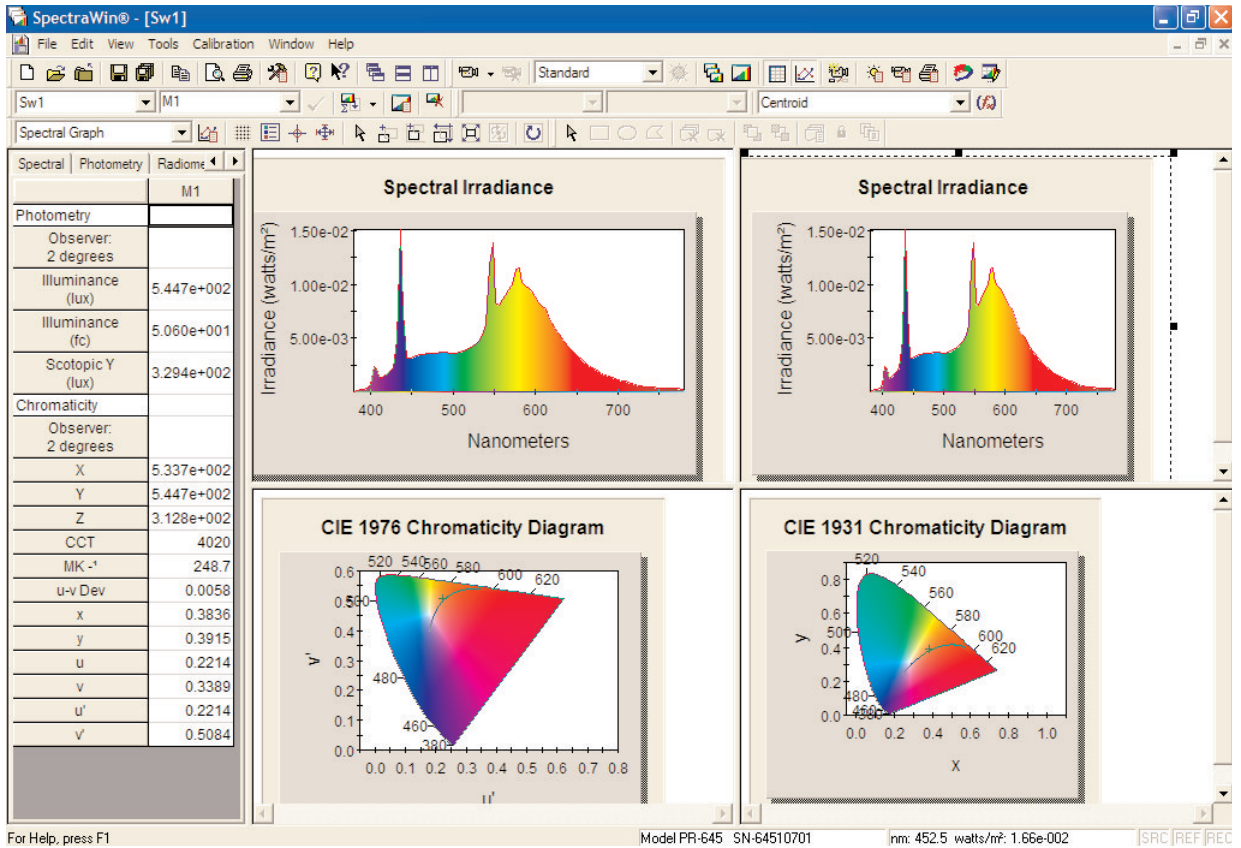
### What's New

- ◆ Completely redesigned GUI
- ◆ Spectral and CIE "Crosshair" Digitizer - Tracks and reports wavelength and spectral (or chromaticity) values.
- ◆ PR-650 calibration capability (optional)
- ◆ Enhanced display graphics (zoom, refresh, scale, resize, multiple display windows for a single measurement.
- ◆ Customize tabular data display.
- ◆ Enhanced math functions including interpolation, smoothing and measurement precision.
- ◆ Multiple, user-defined GO/NO GO color regions.
- ◆ Customize graph titles, axes titles and colors.



*CIE Diagram With Multiple Shaped Regions*

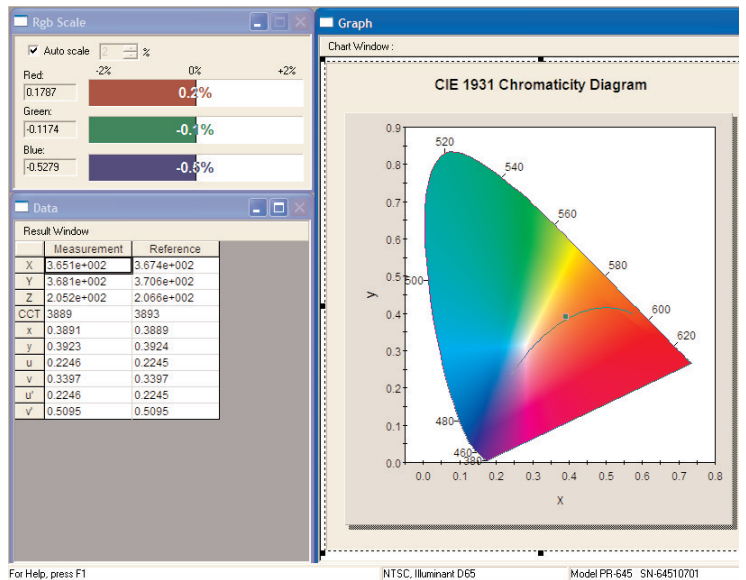
\* PR-704 and PR-714 - Windows 98 and ME only.



Multiple Views of the Same Measured Stimulus

- Centroid
- No operation
  - Reciprocal
  - Log 10
  - Log e
  - Smooth
  - Multiplication
  - Division
  - Addition
  - Subtraction
  - Exponent
  - Interpolation (Linear)
  - Interpolation (Lagrange 3)
  - Interpolation (Lagrange 5)
  - Minimum
  - Maximum
  - Mean
  - Standard deviation
  - Centroid**
  - Peak wavelength
  - Signal to Noise Ratio
  - Precision
  - Luminance Contrast

Enhanced Math Functions



RGB DisplayCal Software



**PHOTO RESEARCH®, Inc.**

9731 Topanga Canyon Place Chatsworth, CA 91311-4125 USA  
 PH: (818) 725-9750 FAX: (818) 725-9770  
 www.photoresearch.com  
 E-mail: sales.pr@photoresearch.com